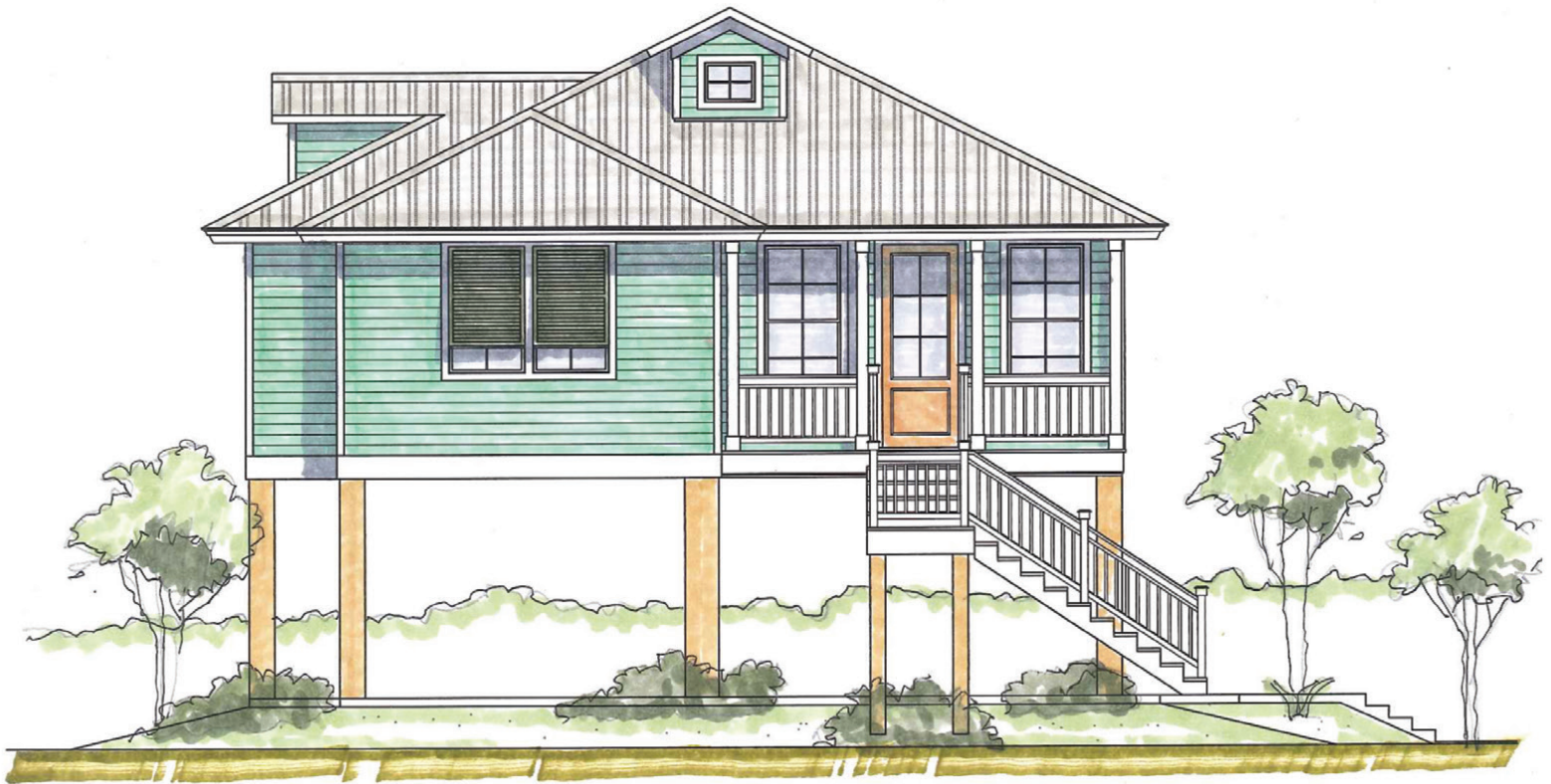


# OAK RIDGE SUBDIVISION HOME BUILDING PLANS

## IRONWOOD

BEDROOMS 3  
BATHROOMS 2



DWELLING	SQ. FT.
----------	---------

Ground Storage	N/A
1st Living	1,500
Enclosed Subtotal	1,500

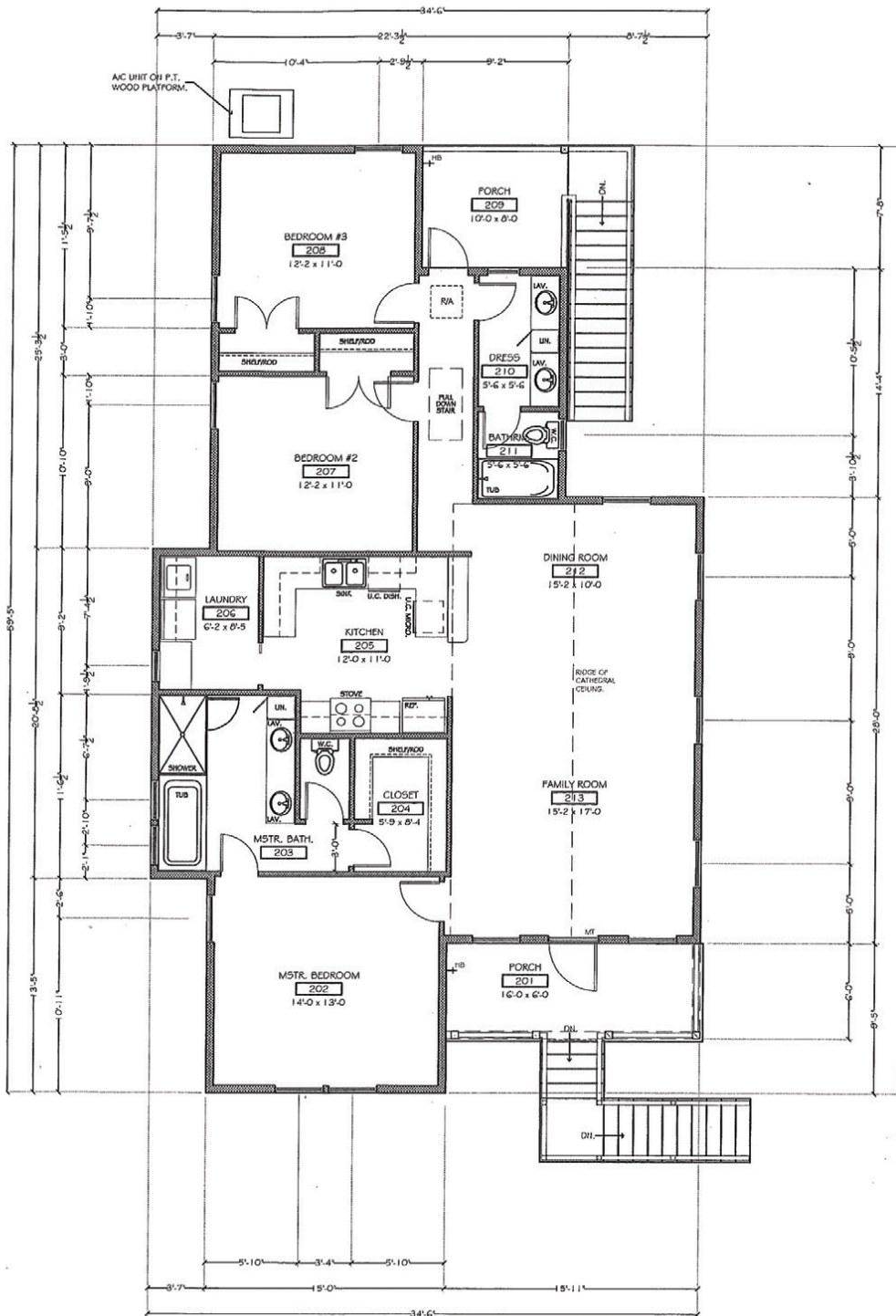
DWELLING	SQ. FT.
----------	---------

Porches	168
Parking / Open Storage	1,668
Total Under Beam	3,336

# OAK RIDGE SUBDIVISION

# IRONWOOD

BEDROOMS	3
BATHROOMS	2



## FLOOR PLAN

# OAK RIDGE SUBDIVISION

## HOME BUILDING PLANS

### TYPICAL FINISH SCHEDULE - may vary from plan to plan -

ROOM	FLOORS	ALLOWANCE
Kitchen, Family/Living, Dining	Vinyl Plank	\$3.50/SF
All Baths & Utility	Ceramic tile	\$6.50/SF, Labor and Material
All Bedrooms & Closets	Carpet	\$23.00/SY, Labor and Material
Parking Area	Concrete	
Porches	Treated wood	
COUNTERTOPS:	All countertops are made of 2cm granite	
CABINETS:	Custom, all wood, recessed maple painted Shaker cabinets	
MASTER TUB:	6-foot soaking tub	
MASTER SHOWER:	Man-made marble shower floor & walls with tempered glass door	
GUEST BATH:	5-foot cast iron tub with a man-made marble alcove finished to 7 feet	

#### APPLIANCE ITEMS:

30" Self Cleaning range, stainless finish  
Vented hood, stainless finish  
Dishwasher, stainless finish  
Disposal, 1/2 hp  
Microwave Drawer

#### MODEL #:

GE JB255  
GE JV348  
GE GSD 4060  
GE GFC 525  
Sharp 24" Model

#### MILLWORK:

##### INTERIOR DOORS:

Solid core masonite w/ 3 1/4" finger jointed casing

##### WINDOW TRIM:

Stool - apron - casing. All windows trimmed out

BASE: 7 1/4" Colonial MDF material  
SHOE: 3/4" quarter round wood  
CROWN: 4 5/8" Colonial MDF material  
CASING: 3 1/4" Colonial wood  
HARDWARE: Sea Cliff - bronze  
WIRE SHELVING: \$500 Allowance

#### SHUTTERS:

All shall be fixed, aluminum, pre-finish units

#### SHELVING:

All closets w/ coated-wire shelving material.

#### PAINTING:

The exterior Hardi material shall receive one primer coat placed over the factory primed board and one finish coat of paint. The interior ceilings shall receive one coat of flat latex. The walls shall receive a prime coat then a rolled-on finish coat of latex paint. All case work shall receive two coats of an oil-base material.